



AUTOMATIC PET FEEDER

USER GUIDE

SKU# APAUTOFD



Thank you for purchasing the ArfPets Automatic Pet Feeder. This User Guide is intended to provide you with guidelines to ensure that operation of this product is safe and does not pose risk to the user. Any use that does not conform to the guidelines described in this User Guide may void the limited warranty.

Please read all directions before using the product and retain this guide for reference. This product is intended for household use only.

This product is covered by a limited one-year warranty. Coverage is subject to limits and exclusions. See warranty for details.

This automatic pet feeder is designed to provide targeted pet food dispensation for your dog or cat, allowing you greater control over feeding times and food consumption for your pet's dietary needs and overall health and wellbeing.

Features

- Clock display
- Blue backlight LCD display
- Feeds according to set times
- Adjustable food distribution
- Personal voice message recorder (up to 10 seconds)
- Four (4) feeding times can be set for any time of the day or night

IMPORTANT SAFETY INFORMATION

WARNING

- Do NOT immerse control panel in water. Base unit should NOT be submerged in water at any time, as this may damage electronic components.
- Do NOT place anything on top of the pet feeder. The unit starts automatically. Keep clear.
- Dispose of all packaging materials properly. Some items may be packed in polybags; these bags could cause suffocation; keep away from children and pets.
- Do NOT allow small children to play with, in or around pet feeder.
- To reduce the risk of injury, close supervision is necessary when an appliance is used by or near children.
- Intended for use with dogs or cats only.
- Do NOT use this pet feeder with puppies, kittens, dogs or cats not able to reach the food tray or with any physical disability.
- Do NOT use outdoors. FOR INDOOR HOUSEHOLD USE ONLY. Check operation frequently to be sure the pet feeder is dispensing properly.
- For dry food use only.
- DO NOT use wet, canned or moist food.
- Pet feeder should be placed on a level surface.
- Before leaving for extended time, always replace batteries with new batteries.
- Do NOT place any foreign object in the pet feeder.
- Do NOT disassemble the pet feeder other than components as instructed in this operating guide.
- To protect against electric shock, if using power cord do not place power cord or plug in water or other liquids.
- Only use attachments recommended or sold by the manufacturer.
- Do not unplug by pulling on power cord. To unplug, grasp the plug, not the power cord.
- Do not operate any appliance if it has a damaged power cord or plug, or if it is malfunctioning or has been damaged. Call the Customer Care Center immediately for further instructions.
- To reduce the risk of electrical shock, do not place or store an appliance where it can fall or be pulled into a tub or sink.
- Always unplug any appliance when not in use, before putting on or taking off parts and before cleaning. Never pull on the electrical power cord to remove the plug from the wall outlet.
- Do not use an appliance for anything other than its intended use.
- If the plug of this device gets wet, turn off the electricity to that wall outlet. Do not attempt to unplug.
- Examine this appliance after installation. Do not plug in if there is water on the Power Cord or plug.
- To avoid tripping, always position power cord out of the way of foot traffic.

CAUTION

- Do not allow pets to chew on or swallow any parts. If you are concerned about the power cord, purchase a cord conduit (a hard plastic protector) at any hardware store to protect the power cord.

NOTICE

- Do not attempt repairs on the pet feeder yourself.
- If an extension cord is necessary, an extension cord with a proper rating should be used.
- Do not use pet feeder for anything other than its intended use. The use of attachments not recommended or sold by the manufacturer may cause an unsafe condition. Do not modify the pet feeder.
- Do not install or store pet feeder where it will be exposed to weather or temperatures below 40°F.
- Do not lift pet feeder by lid, hopper, bowl or bowl holder. Lift and carry feeder using both hands and hopper base, while keeping unit in upright position.
- Read and observe all important notices listed on the pet feeder and in the packaging.

Product Overview



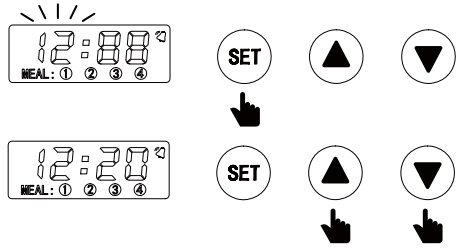
Control Panel



Managing the Settings

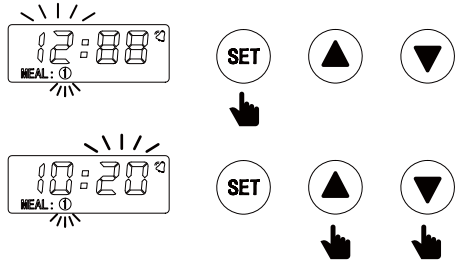
Setting the Time

1. Press the **SET** button. The hour digits will flash.
2. Press the **▲** or **▼** buttons to find the current hour and press **SET** again to save.
3. Once hour is saved, the minute digits will flash.
4. Press the **▲** or **▼** buttons to find the current minute and press **SET** again to save and enter Meal Time Setting Mode.



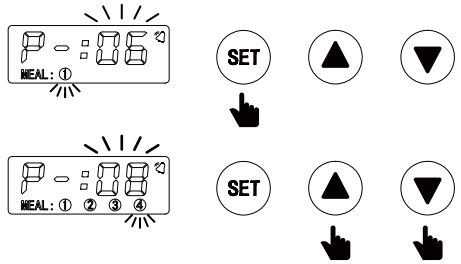
Setting the First Meal Time

1. Once the time is set, the unit will enter Meal Time Setting Mode. The LCD will display the ① icon and the hour digits will flash.
2. Press the **▲** or **▼** buttons to find the hour and press **SET** again to save.
3. Once hour is saved, the minute digits will flash.
4. Press the **▲** or **▼** buttons to find the minute and press **SET** again to save.
5. Repeat the steps above to set additional Meal Times (up to 4) or enter the Meal Portion Setting Mode.



Setting the First Meal Portion

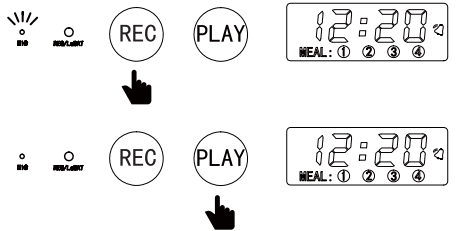
1. Once the time is set, the unit will enter Meal Time Setting Mode. The LCD will display the **P** and the portion digits will flash.
2. Press the **▲** or **▼** buttons to set the portion size and press **SET** again to save.
3. Repeat the steps above to set additional portions (up to 4).



Recording Meal Call for your Pet

To record a call to your pet at mealtime follow these steps.

1. Press and hold the **REC** button. The MIC light will display on the control panel.
2. Speak into the Recording Port (small hole by the MIC light) and record your message (up to 10 seconds).
3. Release the **REC** button when finished recording. The MIC light will go off.
4. Press the **PLAY** button to listen to the message.



Unlocking the Screen

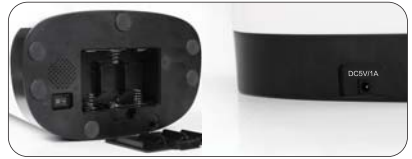
If no activity takes place in 25 seconds, the unit will shut down and enter standby more. Press the **SET** button for three (3) seconds to unlock the screen and follow the instructions above to manage settings.

Manual Feeding

With no times or portions set and display lights on, press and hold the **▲** button to dispense one portion of food manually.

Installing the Batteries

- Install three “D” size alkaline batteries into the battery compartment as shown. Make sure to match the poles (+/-) as indicated.
- If using outlet power, connect DC power cable to the DC jack.



Filling the Food Compartment

- Press both sides of the food compartment and slide upward for removal.
- Fill compartment with pet food. (Do NOT over fill, as this may clog the unit).
- Slide Food Compartment back into place.
- Rotate rotary impeller to align with the slot and press both sides of the food compartment to secure.



Cleaning/Maintenance Instructions

1. Be sure the unit is turned off and power is disconnected before attempting to clean.
2. Wipe with a soft cloth dipped in a small amount of soapy water. Do not use a fully soaked cloth.
3. Food tray and food compartment can be removed for cleaning.
4. Never submerge the base of this unit in water as it contains vital electronics and may short circuit.
5. Do not clean parts in an automatic dishwasher.
6. Ensure that all parts are clean and fully dry before attempting to operate or re-fill the food compartment.

CAUTIONS

- This product is designed for use by dogs and cats. Keep out of the reach of children.
- Settings may slow down when batteries are low. Replace batteries and reset. Do NOT use rechargeable batteries.
- If the food compartment is over-full, the infrared sensors may malfunction and food may clog. Clean out the Food Compartment and re-fill according to capacity lines. Food will distribute properly.
- If “EEEE” shows on the LCD screen, the Pet Feeder has entered Automatic Protection Mode. If this happens, inspect the Food Compartment. If there is food stuck to the bottom, clean thoroughly until food is removed. Replace the Food Compartment and perform a manual feed. If successful, product may again be used per these instructions.
- This device uses dual power supplies. When adaptor is not in use, the product default is battery power.

Specifications

Size: 9.65” X 11.8” X 15”

Capacity: 1.14 gal

Material: ABS

Net Weight: 4.63 lbs.

Power Supply: “D” size alkaline batteries (x3) / DC adapter

DC Power: 5V1A standard power supply

Motor: Working life – 2,000 hours; rotate speed – 8RPM; rated voltage – 4V

Food Category: Dry Dog or Cat food; no canned or wet food or snacks

Customer Service:

Email: support@arfpets.com

Phone: 877-711-6886

Distributed by C & A Marketing, 2 Bergen Turnpike, Ridgeland Park, NJ 07660

Made in China

ARF Pets is a trademark of C&A IP Holdings, LLC

©2016 All rights reserved



[Facebook.com/ArfPets](https://www.facebook.com/ArfPets)



[Instagram.com/ArfPets](https://www.instagram.com/ArfPets)