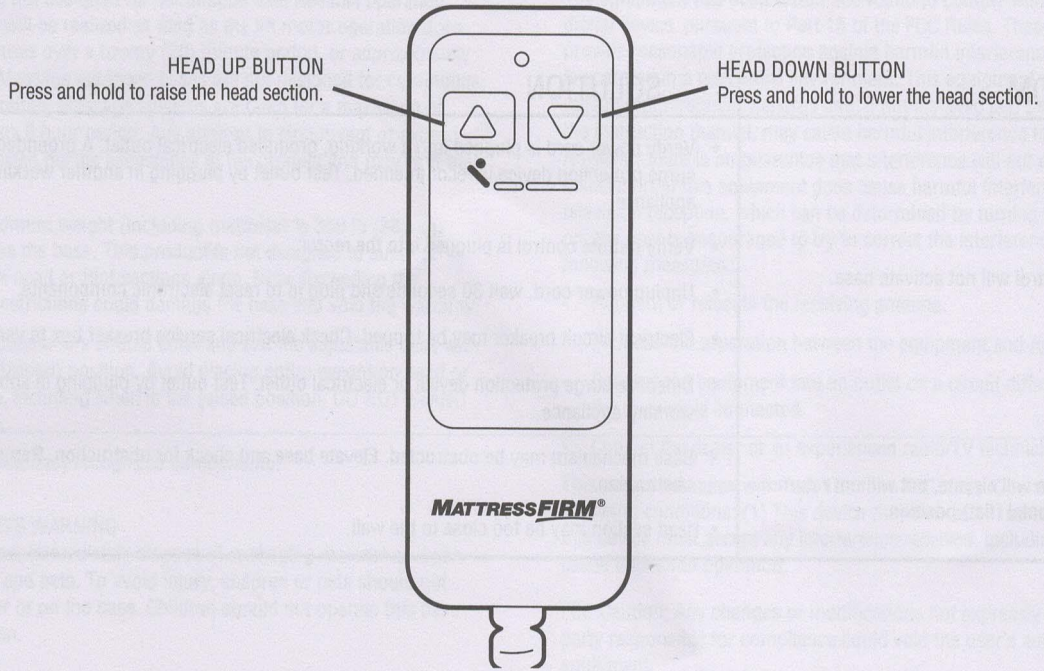
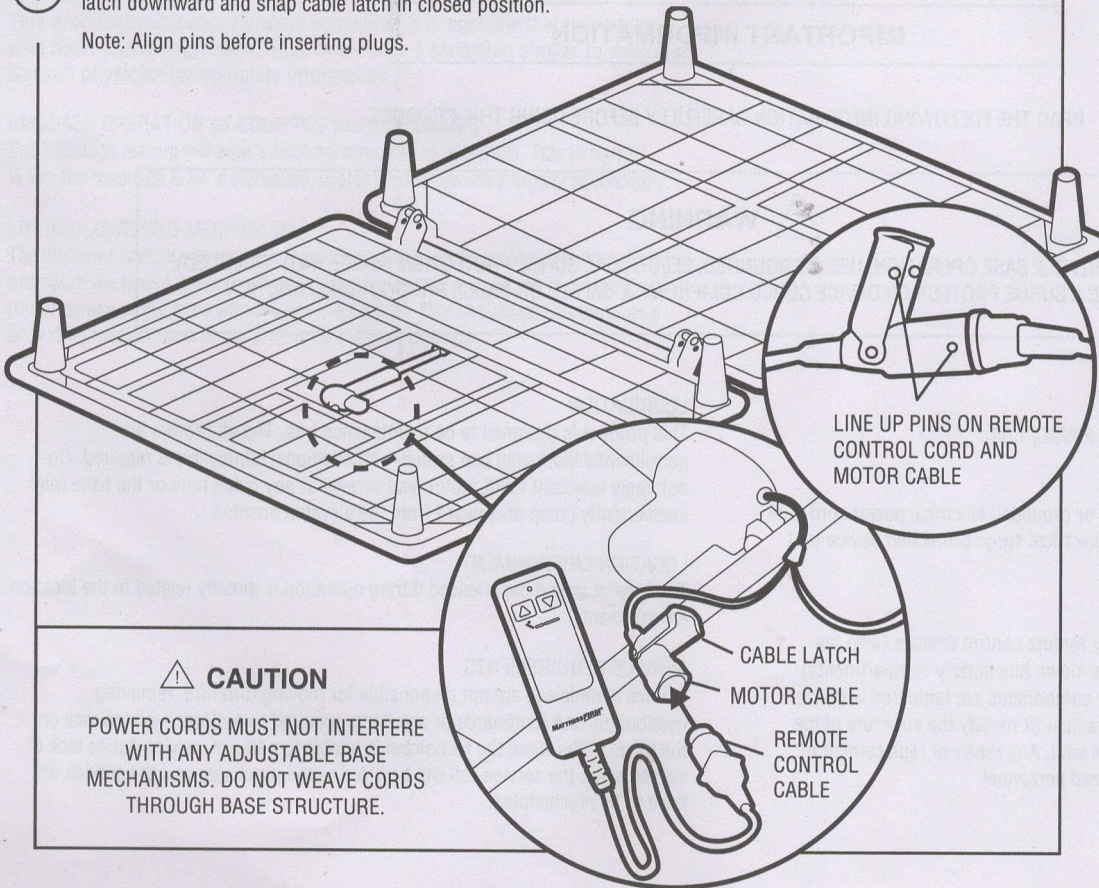


REMOTE CONTROL FUNCTION



REMOTE CONTROL PROGRAMMING - 1 REMOTE TO OPERATE 1 BASE

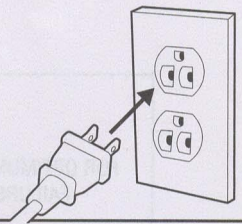
- 1 Plug remote control cord into base motor cable. Pivot cable latch downward and snap cable latch in closed position.
Note: Align pins before inserting plugs.



CAUTION

POWER CORDS MUST NOT INTERFERE WITH ANY ADJUSTABLE BASE MECHANISMS. DO NOT WEAVE CORDS THROUGH BASE STRUCTURE.

- 2 Plug electrical power cord into a working, grounded electrical outlet.



NOTE

AN ELECTRICAL SURGE PROTECTION DEVICE IS RECOMMENDED (NOT INCLUDED).

- 3 Operate the remote control to verify the base functions correctly.